

2010-11 Pacific-10 Conference Composite Schedule

November

Fri., Nov. 12

Arizona at Wichita State
Gonzaga at USC
Rutgers at Cal
Northern Arizona at Arizona State
Washington State at St. Mary's
UCLA at San Diego State

Sat., Nov. 13

Western Oregon at Oregon
Long Beach State at Oregon State

Sun., Nov. 14

Arizona State at UC Riverside
Portland State at Washington
Rutgers at Stanford
St. Mary's at Cal
Washington State at UC Davis
UC Santa Barbara at UCLA

Mon., Nov. 15

Northern Arizona at Arizona
USC at Duke

Thu., Nov. 18

Arizona at Mississippi
Washington State at Portland
UCLA at Notre Dame

Fri., Nov. 19

Stanford at Utah
Oregon at Long Beach State
Oregon State v. E. Michigan (Hawaii Tny.)

Sat., Nov. 20

Cal at New Mexico
Washington at BYU
Oregon State v. CS Northridge (Hawaii Tny.)

Sun., Nov. 21

Arizona State at Tennessee
Stanford at Gonzaga
Oregon State at Hawaii (Hawaii Tny.)
UC Davis at UCLA
Long Beach State at USC

Mon., Nov. 22

Arkansas-Pine Bluff at Arizona
Nebraska at Washington State
Oregon at Portland

Tue., Nov. 23

Georgia at USC
Washington v. Kent St. (Great Alaska Shootout)
Yale at Cal

Wed., Nov. 24

Washington at Great Alaska Shootout

Fri., Nov. 26

Arizona v. Texas A&M (Cancun Classic)
Arizona State v. Providence (Bahamas Tny.)
South Carolina at Stanford
Oregon State at UNLV (UNLV Tny.)
USC v. Princeton (Vanderbilt Tny.)
Washington St. v. North Carolina (Hawaii Tny.)
Idaho at Oregon (Oregon Tny.)

Sat., Nov. 27

Arizona v. Bradley (Cancun Classic)
Arizona State v. Alabama/Fla. State (Bahamas)
CS Fullerton at Cal (Cal Classic)
Oregon State v. Rutgers/Pacific (UNLV Tny.)
CS Bakersfield at Oregon (Oregon Tny.)
Washington St. at Hawaii Tny.

Sun., Nov. 28

Portland State/Tulane at Cal (Cal Classic)
Texas at Stanford
USC v. Vanderbilt/Quinnipiac (Vanderbilt Tny.)
Washington State at Hawaii Tny.
Sacramento State at Oregon (Oregon Tny.)
Temple at UCLA

Tue., Nov. 30

CS Bakersfield at Oregon State

December

Wed., Dec. 1

Washington at Utah

Thu., Dec. 2

Arizona at Nevada

USC at Xavier

Fri., Dec. 3

UCLA at LMU
Cal Poly at Arizona State (ASU Classic)
Oregon at Boise State
Pepperdine at Oregon State

Sat., Dec. 4

Cal at Texas A&M
Lamar/New Mexico v. Arizona St. in ASU Classic

Sun., Dec. 5

USC at N.C. State
Nevada at Washington State
Montana State at UCLA

Tue., Dec. 7

Arizona at New Mexico
South Dakota State at Washington State

Wed., Dec. 8

Washington at CS Northridge

Sat., Dec. 11

Colorado State at Arizona State
Long Beach State at Cal
Washington State at Gonzaga

Sun., Dec. 12

Fresno State at Stanford
UC Riverside at Washington
UCLA at St. Mary's

Tue., Dec. 14

UC Riverside at Oregon
Oregon State at Weber State

Thu., Dec. 16

Arizona State at South Dakota State
Stanford at DePaul

Fri., Dec. 17

Denver at Oregon
Oregon State at Southern Utah

Sat., Dec. 18

Colorado v. USC (Trojan Classic)
Washington State at Wyoming

Sun., Dec. 19

Cal v. Texas-Arlington (UNLV Tny.)
New Mexico State at Arizona
Stanford at Tennessee
Oregon at St. Mary's
Dayton/San Diego v. USC (Trojan Classic)
UCLA v. Hawaii (Hawaii Tny.)

Mon., Dec. 20

Cal v. Texas Tech (UNLV Tny.)
Western Michigan at Washington
UCLA v. East Carolina (Hawaii Tny.)

Tue., Dec. 21

DePaul at Arizona State
Eastern Washington at Oregon State
North Texas at Arizona
Washington State at San Diego State
Oregon at Santa Clara

Wed., Dec. 22

Stanford at San Francisco

Thu., Dec. 23

Georgia Tech at Washington

Tue., Dec. 28

Iona at Arizona
Marist at Arizona State
Cal at Illinois
Xavier at Stanford
LSU at UCLA

Wed., Dec. 29

USC at Fresno State

Thu., Dec. 30

UConn at Stanford

Fri., Dec. 31

Oregon at Arizona
Oregon State at Arizona State
USC at Washington State
UCLA at Washington

January

Sun., Jan. 2

Oregon State at Arizona

Oregon at Arizona State

USC at Washington

UCLA at Washington State

Stanford at Cal

Thu., Jan. 6

Arizona State at Cal
Arizona at Stanford
Washington State at Oregon
Washington at Oregon State

Sat., Jan. 8

USC at UCLA
Arizona at Cal
Arizona State at Stanford
Washington at Oregon
Washington State at Oregon State

Thu., Jan. 13

Oregon at USC
Oregon State at UCLA

Fri., Jan. 14

Cal at Washington State
Stanford at Washington

Sat., Jan. 15

Oregon State at USC
Oregon at UCLA

Sun., Jan. 16

Arizona at Arizona State
Cal at Washington
Stanford at Washington State

Thu., Jan. 20

Washington at Arizona
Washington State at Arizona State
USC at Cal
UCLA at Stanford

Sat., Jan. 22

Washington State at Arizona
Washington at Arizona State
USC at Stanford
UCLA at Cal

Sun., Jan. 23

Oregon State at Oregon

Thu., Jan. 27

Arizona at USC
Arizona State at UCLA
Cal at Oregon State
Stanford at Oregon

Sat., Jan. 29

Arizona at UCLA
Arizona State at USC
Cal at Oregon
Stanford at Oregon State

Sun., Jan. 30

Washington State at Washington

February

Thu., Feb. 3

Cal at Arizona
Stanford at Arizona State
Oregon at Washington
Oregon State at Washington State

Sat., Feb. 5

Stanford at Arizona
Cal at Arizona State
Oregon at Washington State
Oregon State at Washington

Sun., Feb. 6

UCLA at USC
Thu., Feb. 10
USC at Oregon State
UCLA at Oregon
Washington at Cal
Washington State at Stanford

Sat., Feb. 12

USC at Oregon
UCLA at Oregon State
Washington State at Cal
Washington at Stanford

Sun., Feb. 13

Arizona State at Arizona

Thu., Feb. 17

Arizona at Washington State

Arizona State at Washington

Fri., Feb. 18

Stanford at USC
Cal at UCLA

Sat., Feb. 19

Arizona at Washington
Arizona State at Washington State
Oregon at Oregon State

Sun., Feb. 20

Cal at USC
Stanford at UCLA

Thu., Feb. 24

UCLA at Arizona
USC at Arizona State
Oregon at California
Oregon State at Stanford

Sat., Feb. 26

USC at Arizona
UCLA at Arizona State
Oregon State at Cal
Oregon at Stanford
Washington at Washington State

March

Thu., Mar. 3

Arizona at Oregon State
Arizona State at Oregon
Washington State at USC
Washington at UCLA
Cal at Stanford

Sat., Mar. 5

Arizona at Oregon
Arizona State at Oregon State
Washington State at UCLA

Sun., Mar. 6

Washington at USC

Pac-10 Tournament

(@ Los Angeles, CA)

Wed., Mar. 9 (Galen Center)

Game 1: Seed #3 vs. #10, Noon
Game 2: Seed #4 vs. #9, 2:15 pm
Game 3: Seed #5 vs. #8, 5:00 pm
Game 4: Seed #6 vs. #7, 7:15 pm

Thu., Mar. 10 (Galen Center)

Game 5: Winner game 1 v. winner game 4, 3 pm
Game 6: Winner game 3 vs. winner game 2, 5:15 pm

Fri., Mar. 11 (Staples Center)

Game 7: Seed #1 vs. winner game 6, Noon
Game 8: Seed #2 vs. winner game 5, 2:30 pm

Sat., Mar. 12 (Staples Center)

Game 9: Championship, 11:30 a.m.

Media Information

UCLA's Primary Media Outlets

Newspapers

Los Angeles Times

202 West First St.
Los Angeles, CA 90012
(p)213-237-7145
(f)213-237-7876
latimes.com

Orange County Register

625 N. Grand Ave.
Santa Ana, CA 92711
(p)714-796-7817
(f)714-565-6765
ocregister.com

Los Angeles Daily News

21860 Burbank Blvd., Suite 200
Woodland Hills, CA 91367
(p)818-713-3600
(f)818-713-3436
dailynews.com
Beat Writer: Ramona Shelburne

Riverside Press-Enterprise

3450 14th St.
Riverside, CA 92501
(p)951-368-9533
(f)951-368-9029
pe.com

South Bay Daily Breeze

5215 Torrance Blvd.
Torrance, CA 90509
(p)310-540-4201
(f)310-540-3067
dailybreeze.com

Long Beach Press-Telegram

604 Pine Ave.
Long Beach, CA 90844
(p)562-499-1338
(f)562-437-8914
ptconnect.com

Pasadena Star-News/ San Gabriel Valley Tribune

1210 N. Azusa Canyon Rd.
West Covina, CA 91790
(p)626-962-8811
(f)626-856-2758
pasadenastarnews.com
sgvtribune.com

Ventura County Star

550 Camarillo Center Dr.
Camarillo, CA 93010
(p)805-437-0275
(f)805-482-6167
venturacountystar.com

UCLA Daily Bruin

308 Westwood Plaza
Los Angeles, CA 90095
(p)310-825-9851
(f)310-206-0906
dailybruin.ucla.edu

National Newspapers

Associated Press

221 So. Figueroa, Suite 300
Los Angeles, CA 90012
(p)213-626-1200
(f)213-346-0200
ap.org

USA Today

10866 Wilshire Blvd. #890
Los Angeles, CA 90024
(p)310-882-2400
(f)310-882-1901
usatoday.com

Television Stations

CBS2 (Ch. 2)

KCAL (Ch. 9)
4200 Radford Ave.
Studio City, CA 91604
(p)818-655-2400

NBC4 (Ch. 4)

3000 W. Alameda Ave.
Burbank, CA 91523
(p)818-840-4237
(f)818-840-3076

KABC (Ch. 7)

500 Circle Seven Dr.
Glendale, CA 91201
(p)818-863-7677
(f)818-863-7889

KTLA (Ch. 5)

5800 Sunset Blvd.
Hollywood, CA 90028
(p)323-460-5907
(f)323-460-5333

KTTV (Ch. 11)

KCOP (Ch. 13)
1999 S. Bundy Dr.
Los Angeles, CA 90025
(p)310-584-2030
(f)310-584-2450

FS West/Prime Ticket

1150 S. Olive St., Suite 350
Los Angeles, CA 90015
(p)213-743-7800
(f)213-763-4633

ESPN

ESPN Plaza
Bristol, CT 06010
(p)860-766-2000

Radio Stations

AM 570 KLAC

3400 W. Olive Ave. #550
Burbank, CA 91505
(p)818-559-2252
(f)818-729-2511

UCLA Radio Network

c/o Michael Sondheimer
325 Westwood Plaza
Los Angeles, CA 90095
(p)310-825-8699
(f)310-825-6732
uclabruins.com

Press Credentials

Media and photography credentials for UCLA home games may be obtained by working press only by contacting Steve Rourke (srourke@athletics.ucla.edu) or Liza David (ldavid@athletics.ucla.edu) at the UCLA Sports Information Office, PO Box 24044, Los Angeles, CA 90024, (310) 206-6831/Fax (310) 825-8664. All requests should be submitted at least 24 hours in advance. Press credentials may be picked up at lower gate two of Pauley Pavilion.

Photography

Television and photo credentials entitle video and still photographers to shoot from designated areas along the baselines behind each basket. Photographers will not be permitted to shoot from the stands or near the team bench areas.

Interview Policies

All interviews must be arranged by the Sports Information Office. Players have been instructed not to grant any interview, in person or by telephone, not arranged by the Sports Information Office. Player telephone numbers are private and will not be released. Please do not expect players to be available if you have not made prior arrangements.

Interview Availability

Check with the UCLA Sports Information Office regarding the practice schedule. Players are usually available after the practice session. The coach is generally available following practice and by phone, if set up in advance. The best time to reach Head Coach Nikki Caldwell in her office is generally Monday-Friday from 10:30-11:30 am on non-game days.

Postgame Interviews

Postgame interviews of players and coaches shall take place in the designated interview area. All interviews should be requested through UCLA Sports Information staff.

Pauley Pavilion

Pauley Pavilion is located on the campus of UCLA. From Los Angeles International Airport, take Century Blvd. east to the San Diego Freeway (405). Take the San Diego Freeway north to Wilshire Blvd. East. Turn left on Westwood Blvd. and stop at the parking kiosk. Parking, which costs \$10, is available in Lots 6 or 8, which are adjacent to Pauley Pavilion.

Travel Information

For security purposes, the UCLA Sports Information Office does not release to the general public any travel information for UCLA athletic teams. If you would like to reach a member of the UCLA women's basketball team on the road, please contact the Sports Information Office.

Pac-10 Tournament Information

For information on the Pac-10 women's basketball tournament to be held on Mar. 9-12 at the Galen Center and the Staples Center in Los Angeles, CA. Please contact the Conference Office for credential information. The Pac-10 Conference office phone number is (925) 932-4411. Be sure and check out the Conference web site at www.pac-10.org.

Live Coverage

The UCLA Radio Network will broadcast all games in 2009-10. The live audio can be accessed via UCLA's Official Website, uclabruins.com, through UCLA All-Access. Providing the play-by-play for the games will be Dave Marcus and Michael Sondheimer. Select games will also have streaming video on UCLABruins.com. Live game statistics via GameTracker will also be available for all home games and select road games. Please check the website for dates and times.

Women's Basketball Support Staff



Kristin Lage
Staff Athletic Trainer



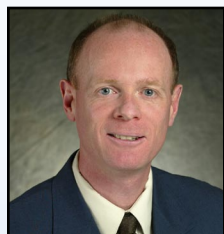
Nicole Watanabe
Student Athletic Trainer



Sonal Singh
Student Athletic Trainer



Wes Long
Athletic Performance Coach



Steve Rourke
Sports Information



Liza David
Sports Information



Jonathan Silver
Administrative Assistant



Pete Maglieri
Equipment Room



Kenny Donaldson
Assistant Director of
Academic Services

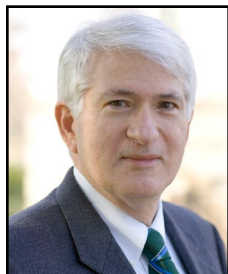


Aaron Giacosa
Student-Athlete Counselor



Ja'Nae Davis
Learning Specialist

Administrator Biographies



Dr. Gene Block

Chancellor • Stanford '70 • 4th Year

Dr. Gene Block became chancellor of UCLA in August of 2007. As chief executive officer, he oversees all aspects of the university's three-part mission of education, research and service. A champion of public universities, Chancellor Block quickly called for UCLA to deepen its engagement with the city of Los Angeles and to increase access for students from underrepresented populations. An advocate of interdisciplinary scholarship, he has spearheaded a process of broad-based, campuswide strategic planning.

Chancellor Block holds UCLA faculty appointments in psychiatry and bio-behavioral sciences in the David Geffen School of Medicine and in physiological science in the College of Letters of Science. He also heads a research laboratory on campus that is funded by the National Institutes of Health (NIH).

Previously, Dr. Block served as vice president and provost of the University of Virginia, where he headed an NIH graduate training program aimed at increasing the number of scientists from underrepresented groups. In 1998, he received the Commonwealth of Virginia's Outstanding Public Service Award for his work with Virginia's business community. Dr. Block joined the faculty of the University of Virginia in 1978 as an assistant professor of biology. He served as vice provost for research from 1993 to 1998 and then as vice president for research and public service until his appointment as vice president and provost in 2001.

A native of Monticello, NY, Dr. Block holds a bachelor's degree in psychology from Stanford University and a master's and Ph.D. in psychology from the University of Oregon. He also completed a postdoctoral fellowship at Stanford, working with the late Colin Pittendrigh, "the father of biological timing" and distinguished biologist and former Stanford President, Donald Kennedy. Chancellor Block and his wife, Carol, have two adult children.



Dan Guerrero

Athletic Director • UCLA '74 • 9th Year

On April 25, 2002, Daniel G. Guerrero was named UCLA's eighth Director of Athletics, succeeding the retiring Peter Dalis. A former Bruin baseball player, Guerrero, who assumed his duties on July 1, 2002, exudes the pride of a student-athlete who is now in charge of the program at his alma mater.

Guerrero, one of the most respected and talented administrators in intercollegiate athletics, has placed his mark on the program as the director of athletics at UCLA. He is the current president of the Division I Athletic Directors Association. In addition, he is the first vice-president of the National Association of Collegiate Directors of Athletics (NACDA) and a member of the NACDA Executive Committee. This past June, Guerrero completed a five-year term on the NCAA's Division I Men's Basketball Committee. As the committee chair in 2009-10, he was involved with the negotiation of the \$10.8 billion, 14-year NCAA Men's Basketball Tournament television package as well as the decision to expand the tournament to 68 teams.

In Guerrero's eight years as AD, he has clearly established a pattern of "image and substance" that few in his profession can match. UCLA stands as the No. 1 University in the nation for NCAA Team Championships (106) won, a number that continues to grow under his direction. In those eight years, UCLA teams have won 20 NCAA national team championships (the highest total in the nation in that span) in 11 different sports, finished second 16 times and have had an additional 28 Top Five finishes (64 total). A staggering 152 teams (of 184 possible) have qualified for NCAA post-season competition, and the football team has appeared in seven bowl games. The program has also won 45 conference championships in 15 different sports, produced over 400 All-Americans and featured four Honda Award winners, including the 2003-04 Collegiate Woman Athlete of the Year.

In the last eight years, UCLA has finished second three times (2007-08, 2006-07, 2005-06), third twice (2004-05, 2003-04), fourth (2009-10), sixth (2002-03) and 16th (2008-09) in the race for the National Association of Collegiate Directors of Athletics (NACDA) Director's Cup.

Guerrero came to UCLA in 2002 from UC Irvine, where he had served as UCI's fifth Director of Athletics for 10 years. Prior to arriving at UC Irvine, he was the Athletic Director for five years at Cal State Dominguez Hills (1988-92). He received his Bachelor's degree from UCLA in 1974 and played second base in the Bruin baseball program for four years. Guerrero was inducted into the UCLA Baseball Hall of Fame in 1996. He earned a Master's degree in Public Administration in 1982 from Cal State Dominguez Hills and was named to the Pi Alpha Alpha Honor Society for Public Affairs and Public Policy that same year. Guerrero is married to the former Anne Marie Aniello and they have two daughters: Jenna and Katie.



Petrina Long

Senior Associate Athletic Director/SWA • California '77 • 7th Year

Petrina Long enters her seventh year as senior associate athletic director/senior women's administrator at UCLA, having joined the staff in June of 2004. Long has oversight responsibility for several sports, including women's basketball, women's volleyball, softball and gymnastics, as well as several administrative areas, among them academic services, compliance, equity issues, and governmental relations.

Long came to UCLA from UC Irvine, where she had served as senior associate athletic director/senior women's administrator since 1993, working closely with Bruin athletic director Dan Guerrero. She also served as UCI's interim athletic director following Guerrero's departure to UCLA.

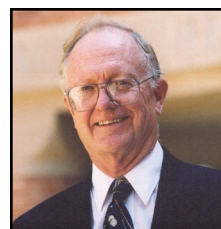
In addition to her UCLA commitments, Long is also extensively involved in a number of areas relating to intercollegiate athletics. She currently serves as chair of the new NCAA Recruiting Cabinet after serving for three years as chair of the NCAA Academics and Eligibility Cabinet (AEC) Subcommittee on Recruiting. Long also serves on the NCAA Men's Volleyball Committee. On the conference level, Long is an administrative liaison to several sports, including women's volleyball, cross-country, track & field, and men's soccer (MPSF). She is also a past chair of the Senior Women's Administrative Committee (SWAC) and is currently a member of the Women's Basketball Tournament Committee.

During her 11 years at UCI, Long supervised several of the university's 23 sports teams, as well as academic and student support, compliance and sports medicine. In addition, she was active in numerous groups on campus and in the community. Her campus activities included serving on the Chancellor's Advisory Committee on Intercollegiate Athletics (CACIA), and chairing the Diversity Development Program Board for two years. She was a board member of the Irvine Chamber of Commerce for several years and has been a school volunteer in the city of Tustin. Long was a member of the Big West Council and previously chaired the Big West Compliance Committee for two years. She also served on the Executive Committee of both the Big West Conference and the Mountain Pacific Sports Federation.

Prior to her tenure at UCI, Long spent nine years at Columbia University, serving in both the associate and assistant athletics director positions. She was the Assistant Athletics Director for Academic Affairs at Southern Methodist University from 1982-84 and was an advisor for student-athletes at the University of California, Berkeley, from 1979-82.

Long received her B.A. degree in Anthropology from the University of California, Berkeley, in 1977 and her Master's degree in Anthropology from Columbia in 1992. She and her husband, Sam McCamey, have a daughter, Samantha, and two sons, Monte and Traland.

Key Athletic Department Staff



Don Morrison
Faculty Athletic Rep.



Michael Sondheimer
Asso. A.D., Academic Admissions Svcs.



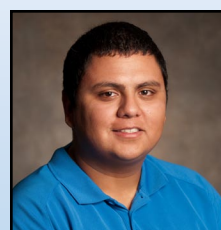
Jamie Arneson
Marketing/Promotions



Ryan Eklund
Marketing/Promotions



Lori Lamar
Event Management



David Godoy
Video

Follow The Bruins On The Air

Head Coach Nikki Caldwell and her UCLA women's basketball team will be featured throughout the season on the UCLA "Bruin Talk" Cable Television Show. "Bruin Talk", which was taped for years at Time Warner Cable in Santa Monica, and has moved to the UCLA campus and is taped at UCLA Res TV in De Neve. The program, which is hosted by Ralph Irvin and Gevrina Seferaj, airs weekly from Ventura County to the San Diego area. The show also airs throughout the San Fernando Valley, into the South Bay and parts of Orange County and in Los Angeles on Channel 36. On campus, it airs on a daily basis in the UCLA residence halls.

Fox Sports Net/ESPN have developed a 21-game package which will be shown, live or delayed, in a minimum of 30 million homes. Fox Sports Net has confirmed a live telecast of UCLA's games at home against USC, Oregon and Stanford and the road contest at USC. Cable station LA Channel 36 will also broadcast selected home games on a delayed basis.

UCLA will have all games (regular season and post-season) broadcast by the Bruin radio network and on the Internet (www.uclabruins.com). In addition, am570 and Sirius XM satellite radio will broadcast selected games.

This is the 33rd straight year that UCLA women's athletics events have been broadcast on commercial radio, longer than any other program in the West. Local broadcasters Dave Marcus, Michael Sondheimer and Tracy Murray will call the action.



Coach Nikki Caldwell, with am570 broadcaster Wayne Cook, was an on-air guest on the UCLA Football pre-game show.

UCLA / Pac-10 Television Schedule

Date	Game	Pacific Time
Fri., Nov. 12	UCLA at San Diego State (themtn.)	7 pm
Sun., Nov. 28	Texas at Stanford (FSN)	Noon
Sat., Dec. 4	Cal at Texas A&M (FSN)	9:00 am
Thu., Dec. 30	Connecticut at Stanford (ESPN2)	6:00 pm
Sun., Jan. 2	Stanford at Cal (FSN)	12:30 pm
Sat., Jan. 8	USC at UCLA (FSN)	1:30 pm
Sat., Jan. 15	Oregon at UCLA (FSN)	1:30 pm
Sun., Jan. 16	Arizona at Arizona State (FSN)	2:00 pm
Sun., Jan. 23	Oregon State at Oregon (FSN)	Noon
Thu., Jan. 27	Stanford at Oregon (FSN)	6:00 pm
Sat., Jan. 29	Arizona State at USC (FSN)	2:30 pm
Sun., Jan. 30	Washington State at Washington (FSN)	Noon
Sun., Feb. 6	UCLA at USC (FSN)	1:00 pm
Sat., Feb. 12	Washington State at Cal (FSN)	7:30 pm
Sun., Feb. 13	Arizona State at Arizona (FSN)	1:00 pm
Sun., Feb. 20	Stanford at UCLA (FSN)	Noon
Sat., Feb. 26	Wild Card Selection (FSN)	7:30 pm
Thu., Mar. 3	Cal at Stanford (FSN)	6:00 pm
Sun., Feb. 6	Washington at USC (FSN)	12:30 pm
Fri., Mar. 11	Pac-10 Tourn. Semifinal (FSN)	Noon
Fri., Mar. 11	Pac-10 Tourn. Semifinal (FSN)	2:30 pm
Sat., Mar. 12	Pac-10 Tourn. Championship (FSN)	11:30 am



UCLA radio network broadcasters Tracy Murray, Dave Marcus and Mike Sondheimer.

The Bruin Radio Network Schedule

Date	Opponent (site)	Pacific Air Time*
Mon., Nov. 8	Vanguard (Exhib.)	7 pm
Fri., Nov. 12	@ San Diego State	7 pm
Sun., Nov. 14	UC Santa Barbara	2 pm
Thu., Nov. 18	@ Notre Dame	5 pm
Sun., Nov. 21	UC Davis	2 pm
Sun., Nov. 28	Temple	2 pm
Fri., Dec. 3	@ LMU	7 pm
Sun., Dec. 5	Montana State	1 pm
Sun., Dec. 12	@ St. Mary's	2 pm
Sun., Dec. 19	vs. Hawaii (@Hilo, HI)	10 pm
Mon., Dec. 20	vs. East Carolina (@Hilo, HI)	10 pm
Tue., Dec. 28	LSU	7 pm
Fri., Dec. 31	@ Washington	2 pm
Sun., Jan. 2	@ Washington State	1 pm
Sat., Jan. 8	USC	1:30 pm
Thu., Jan. 13	Oregon State	7 pm
Sat., Jan. 15	Oregon	1:30 pm
Thu., Jan. 20	@ Stanford	7 pm
Sat., Jan. 22	@ Cal	2 pm
Thu., Jan. 27	Arizona State	7 pm
Sat., Jan. 29	Arizona	1 pm
Sun., Feb. 6	@ USC	1 pm
Thu., Feb. 10	@ Oregon	7 pm
Sat., Feb. 12	@ Oregon State	2 pm
Fri., Feb. 18	California	7 pm
Sun., Feb. 20	Stanford	Noon
Thu., Feb. 24	@ Arizona	6 pm
Sat., Feb. 26	@ Arizona State	7:30 pm
Thu., Mar. 3	Washington	7 pm
Sat., Mar. 5	Washington State	2 pm
Mar. 9-12	Pac-10 Tournament (@ Los Angeles)	TBD

* Games will be broadcast on the internet at www.uclabruins.com. Check the local listings for an over-the-air radio broadcast. Please note that times are subject to change. Times listed are Pacific time. Selected games will be broadcast on am570 and on Sirius XM satellite radio. All post-season games will be broadcast.

UCLA on the Internet

All of UCLA's radio broadcasts can also be heard on the internet through:

uclaBruins.com



Nation's #1 Overall College Experience

10 SIGNIFICANT REASONS TO ATTEND UCLA

1. #1 in NCAA Titles (106)

1st ever to reach the 100 title milestone; 20 NCAA Titles in the last 8 years (#1 nationally) since Dan Guerrero became UCLA Athletic Director; #1 in Olympians and Olympic Gold Medals from 1984-2008; leader in producing professional athletes; nation's finest overall combined academic, athletic and career resources for student-athletes; the best is possible at UCLA!

2. Prestigious Academic Degree / A National Leader in Producing Top Students

Ranked in the top ten among universities in most academic surveys; professional schools ranked among top five in most areas and top ten in others; #1 in the nation for undergraduate student applications every year since 1999; among all-time leaders in producing NCAA Post-graduate Scholarship winners; #1 in *Kaplan Report* survey of student resources for the college experience

3. Highest Quality of Life/Best Place to Live

Best in West and #2 overall public university in 'Princeton Review' in on-campus housing options and dorm food; 334 sunshine days a year; average year-round temperature of 74 degrees F.; 5 miles from the beach; thriving campus community of Westwood as part of UCLA; surrounded by Bel Air, Beverly Hills, Century City, Brentwood, and Santa Monica

4. World Class Facilities

Historic Pauley Pavilion; the Rose Bowl (SI's #1 venue of all college sites); Los Angeles Tennis Center; Drake Stadium for track & soccer; Jackie Robinson Stadium; Easton Stadium; the new Spieker Aquatic Center; Sunset Canyon Recreation Center; numerous championship golf courses; on-campus golf practice facility; Acosta Athletic Training Complex for the best in sports medicine, athletic performance, and finest training equipment

5. Legendary Coaching, Tremendous Sport Stability, Consistently Training Winners

UCLA has Olympic, National and USA Team coaches on its staff and individuals who have trained at the highest level and know how to win! No university can match UCLA's coaching stability in that only one Bruin head coach has left for another Division I head coaching position over the past 40 years

6. Exceptional Academic Support for All Student-Athletes

12 full-time staff working in academic and student services. This includes academic counseling, learning specialist, life skills coordinator, priority pre-enrollment in classes, academic mentors, individual and group tutoring, academic awards banquet, lecture notes, laptop lending program and career guidance

7. Your Future at the Highest Level

USA's #1 Career Center for full-time, part-time or internship positions; average personal income for a UCLA graduate is \$77,500; average home value for UCLA grads is over \$500,000; the UCLA degree means success across the world

8. Complete National Sports Media Coverage/ L.A. is the Place

More overall national, regional and local television team exposure than any other college in the nation; numerous daily newspapers; #1 in former student-athletes and students in sportscasting, news broadcasting, sports writing, acting, etc. to act as contacts for current athletes; #1 in *Sports Illustrated* cover appearances; Major media outlets like ESPN, Fox Sports and USA Today have offices in L.A.

9. Nation's #1 Tradition of Athletic Excellence With Historic Long-Term Success

Kareem Abdul-Jabbar, Troy Aikman, Arthur Ashe, Lauren Cheney, Jimmy Connors, Lisa Fernandez, Troy Glaus, Natalie Golda, Rafer Johnson, Jackie Joyner-Kersey, Karch Kiraly, Liz Masakayan, Ann Meyers, Jonathan Ogden, Corey Pavin, Jackie Robinson, Al Scates, Sharon Shapiro, Chase Utley, Bill Walton, and John Wooden are just a few of the most significant people that have attended/coached at UCLA. UCLA is the #1 school world-wide in name recognition

10. UCLA Intangibles/Best College Location

UCLA's overall success combining prestigious academics, top athletic finishes and tremendous social life cannot be matched by any other university. UCLA has great resources available on a daily basis for our student-athletes to be the best in any area they select. UCLA's axiom is Champions Made Here!

UCLA Top National, International Sports Power

NCAA Division I Team Championships by School

(Through Spring 2010)

School	Men	Women	Total
1. UCLA	71	35	106
2. Stanford	60	39	99
3. USC	77	14	91
4. Oklahoma St.	49	0	49
5. Arkansas	43	0	43
6. LSU	17	25	42
7. Texas	18	22	40
8. Penn State	29	9	38
9. No. Carolina	10	26	36
10. Michigan	31	2	33

Top Countries in Olympic Gold Medals (1984-2008)

- USA
- USSR/Russia
- China
- Germany
- UCLA Athletes**
- Italy
- Australia



UCLA's Previous National Finishes in Overall Athletic Program Surveys

FIRST PLACE FINISHES:

Men: 1973, 76, 78, 79, 81, 83, 86, 87, 88, 89, 92

Women: 1978, 79, 80, 81, 82, 85, 88, 89, 90, 91

SECOND PLACE FINISHES:

Men: 1971, 72, 74, 75, 77, 80, 82

Women: 1977, 83, 84, 86, 87, 92, 93

OTHER PLACES:

Men: 4th 84; 3rd 85; 6th 90; 10th 91; 5th 93

COMBINED FINISHES:

First: 1993

Second: 1996, 2000, 2001, 2006, 2007, 2008

Third: 1994, 95, 97, 2004, 2005

Fourth: 1998, 2010

Fifth: 1999, 2002

Sixth: 2003



UCLA's Hall of Champions includes NCAA titles in 17 different sports among its nation-leading 106 total. Since Dan Guerrero became Athletic Director in 2002-03, **UCLA has won a nation-leading 20 NCAA crowns over the past 8 years.**

UCLA #1 for Overall Program Awards

(men began in 1971; women in 1977; combined in 1993; NACDA in 1994)

School	#1 Titles
1. UCLA	22
2. Stanford	20
3. Texas	8
4. USC	6
5. No. Carolina, Michigan, Arkansas, Arizona St.	1

NCAA Titles Since 2002-03

School	#1 Titles Won
1. UCLA	20
2. Stanford	18
3. USC	14
4. Auburn	11
5. Penn State	9
6. Georgia	8
6. North Carolina	8

NACDA Director's Cup Athletic Program Overall Rankings (1994-2010)

(Schools ranked in the top 6 every year of the athletic poll)

School	Years Ranked Top 6 Nationally
1. Stanford	17
2. UCLA	16
3. Florida	13
4. Michigan	12
5. No. Carolina	10
6. Texas	7
7. Arizona	5
8. Georgia	3
8. USC	3
8. Virginia	3

Only 23 schools have ever been ranked in top ten of the survey—other schools are Duke, Arizona State, Washington, Minnesota, Notre Dame, Florida State and Texas A&M.

No. 1 With 106 NCAA Team Titles

UCLA's 106 NCAA team championship trophies, the most of any school in the nation, are on display in the Athletic Hall of Fame, located in the J.D. Morgan Center. UCLA has won 20 team titles in the last eight years.



UCLA'S NCAA TITLES BY SPORT (106)

MEN (71)

Basketball (11)

1964 1970
1865 1971
1967 1972
1968 1975
1969 1995
1970

Golf (2)

1988 2008

Gymnastics (2)

1984 1987

Soccer (4)

1985 1997
1990 2002

Swimming (1)

1982

Water Polo (8)

1969 1996
1971 1999
1972 2000
1995 2004

Tennis (16)

1950 1970
1952 1971
1953 1975
1954 1976
1956 1979
1960 1982
1961 1984
1965 2005

Track & Field (8)

1956 1973
1966 1978
1971 1987
1972 1988

Volleyball (19)

1970 1984
1971 1987
1972 1989
1974 1993
1975 1995
1976 1996
1979 1998
1981 2000
1982 2006
1983

WOMEN (35)

Golf (2)

1991 2004

Gymnastics (6)

1997 2003
2000 2004
2001 2010

Softball (11)

1982 1992
1984 1999
1985 2003
1988 2004
1989 2010
1990

Tennis (1)

2008

Indoor Track & Field (2)

2000 2001

Outdoor Track & Field (3)

1982 2004
1983

Volleyball (3)

1984 1991
1990

Water Polo (7)

2001 2007
2003 2008
2005 2009
2006

WOMEN'S Additional Titles:

Golf – 1971; Crew – 1974;
Volleyball – 1972, 1974, 1975;
Track & Field – 1975, 1977;
Badminton – 1977;
Basketball – 1978;
Softball – 1978;
Tennis – 1981;
Water Polo – 1996, 1997,
1998, 2000



2010 Women's Gymnastics



2010 Women's Softball

UCLA: Simply The Best Overall!

UCLA 'Most Complete' Athletic Program

From *Sports Illustrated on Campus* in, April 2005: "UCLA has the most complete athletic program in the country."

Bruin Weather Helps Athletic Success

US Weather Service records for the Westwood area indicate the UCLA campus averages 334 'Sun Days' a year with an average year round temperature of 74 degrees.

'Dream College' Where Parents & Students Want to Attend

The 2010 *Princeton Review* survey of parents and future college students had UCLA ranked #6 nationally by parents and #7 by students as their 'Dream College' to attend. UCLA was the only public university in the top 10.

UCLA 'Most Popular' College for Applications

UCLA continues as the 'Most Popular' college for students to apply for admission in the 21st century. UCLA annually receives over 50,000 applications for 5,000 admission spots. It has been that way every year since 1999.

UCLA 'Hottest University' to Attend

Newsweek '08 College Guide: UCLA is selected as the 'Hottest University' to attend in the major college category.

UCLA One of 25 'New Ivies'

Newsweek magazine article in 2006 on the 25 'New Ivies' among colleges: "The nation's elite colleges include more than the top Ivies. A range of schools are getting fresh bragging rights like UCLA."

UCLA Campus Receives Most Media Attention

Scenic parts of the UCLA campus are utilized for more movies, television shows, and commercials than any other college. The UCLA name appears daily in more publications than any other school according to *Newswatch* Magazine.

UCLA 'Most Interesting College'

The 2003 Kaplan Publication on 'Most Interesting Colleges', has UCLA #1 overall blending their 6 categories of Academic Facilities, Freshman Housing, Career Services, Highest Academic Standards, Hot & Trendy Universities and Best Value.

UCLA #1 Hospital in West Since 1989

UCLA was ranked #5 overall and again #1 in the West (every year since 1989) by *U.S. News*. The Ronald Reagan UCLA Medical Center, which opened in 2008, is a one million square foot facility. It has been labeled as 'the hospital of the future.'

UCLA #1 in Female 'Athlete of the Year' Awards

UCLA is #1 all-time in women's collegiate history in Honda-Broderick Female Athlete of the Year Awards. Ann Meyers, Jackie Joyner-Kersey, Lisa Fernandez and Natasha Watley have all won from UCLA.

'Public Good' and 'Eco-Friendly' National Leader

Washington Monthly Magazine for 2010 rated UCLA #3 nationally among colleges in its contributions to the nation's 'Public Good' through Service, Social Mobility, and Research. The Sierra Club's 2010 list of top colleges committed to advancing sustainability on their campuses had UCLA #9 overall in having an 'eco-friendly' environment.

UCLA 'Coolest' School to Experience

Seventeen Magazine ranked UCLA as one of the '10 coolest schools' where you can get the best college experience. The criteria included professor's involvement, great shopping, campus safety and parties.

UCLA Has #1 Career Center

Business Week magazine has ranked the UCLA Career Center as #1 in the nation when blending opportunities for students for internships, part-time work, full-time jobs, and other needed services to prepare a person for today's job market.

Academic & Student Services (AS2)

Mission Statement

“Student-athletes Understand that Character Creates Educational Self-Sufficiency”

The mission of the UCLA Academic & Student Services office (AS2) and its S.U.C.C.E.S.S. Program is to provide an interactive learning environment that emphasizes life-long learning habits, goal setting, teamwork, leadership and character. Centered on the idea of the self-sufficient, independent learner, the S.U.C.C.E.S.S. Program features academic counseling, academic and student support services, and student-athlete development programs that support and encourage student-athletes to reach their full potential academically and personally. The AS2 team promotes a healthy balance between academics and athletics and embraces UCLA's "True Bruin" philosophy setting forth the ethical standards of integrity, excellence, accountability, respect and service. Our commitment is to assist student-athletes in their transition to the university, earning their UCLA degree, and develop their skills and confidence to be champions in life.

UCLA's Academic & Student Services Office

ACADEMIC COUNSELING

- Program Planning & Course Selection
- Degree Progress Report Checking
- Priority Enrollment
- Majority Exploration
- Graduate & Professional School Referrals
- Academic Difficulty Counseling

ACADEMIC SUPPORT SERVICES

- Academic Mentoring
- Peer Learning Sessions
- Community of Learners Program
- Directed Learning Programs
- Midterm Progress Reports
- Learning Strategies & Educational Assessments

STUDENT SUPPORT SERVICES

- Orientation Programs
- Academic Travel Coordinator
- Learning Center Computer Lab
- Laptop Lending Program
- Scholar-Athlete Banquet
- Bruin Athletics Graduation Reception
- Awards & Postgraduate Scholarships

STUDENT-ATHLETE DEVELOPMENT

- Community Outreach
- Personal Development
(Health Education, Life Skills Workshops & Team Building)
- Wooden Academy: Teamwork, Leadership & Character
- Bruin Athletic Council (BAC)
- Student-Athlete Mentors (SAMS)
- Professional Development
(Career Exploration, Internships, Resume & Interviewing Skills)



Dr. Christina Rivera
Assistant Athletic Director
Academic & Student Services



Mike Casillas
Director of
Student-Athlete Counseling



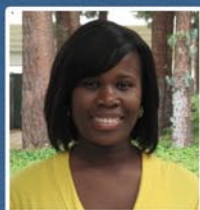
Ashley Armstrong
Director of
Student-Athlete Development



Tim Anderson
Football
Academic Coordinator



Ric Coy
Assistant Director of
Student Services



Ja'Nae Davis
Learning Specialist



Kenny Donaldson
Assistant Director of
Academic Services



Aaron Giacosa
Academic Counselor



Linda Lassiter
Academic Counselor



Joanne Suechika
Academic Counselor



Nick Thornton
Eligibility Coordinator



Sabrina Youmans
Learning Specialist



UCLA: A Prestigious & Influential University

UCLA ranks as one of the Top Ten Universities according to the American Council of Education and Gourman Report of national educational ratings.

UCLA Ranks in the Top Ten Academic Departments among all American Universities

- | | |
|------------------------------------|-----------------------------------|
| ■ Anthropology | ■ Linguistics |
| ■ Applied Science | ■ Music |
| ■ Art & Design | ■ Philosophy |
| ■ Asian Studies | ■ Physiology |
| ■ Bacteriology/Microbiology | ■ Physiological Science |
| ■ Biochemistry | ■ Pre-Business Education |
| ■ Biology | ■ Pre-Education Field |
| ■ Chemistry | ■ Pre-Legal Education |
| ■ Economics/Business | ■ Pre-Medical Education |
| ■ Engineering/
Computer Science | ■ Psychology |
| ■ French | ■ Sociology |
| ■ Geography | ■ Spanish |
| ■ Geology | ■ Theater Arts/
Communications |
| ■ German | |

Kaplan Survey of 320 Most Interesting Colleges

(Based on academic facilities, housing, career services, value, highest academic standards & being trendy)

1. **UCLA***
2. Stanford
3. Texas A & M
4. Texas
5. Penn State

***UCLA was the only institution ranked in the top 15 in all six categories**

"Leading Universities" in terms of influence, according to *CHANGE Magazine*

- **UCLA**
- Chicago University
- Columbia University
- Harvard University
- Michigan University
- MIT
- Stanford University
- UC Berkeley
- Virginia University

UCLA Ranked among Top Ten Professional Schools—Cartier Report (alphabetical order after UCLA)

BUSINESS SCHOOLS

UCLA

Carnegie–Mellon University
Chicago University
Cornell University
Harvard University
MIT
Northwestern University
Pennsylvania University
Stanford University
UC Berkeley

LAW SCHOOLS

UCLA

Chicago University
Columbia University
Harvard University
Michigan University
Pennsylvania University
Stanford University
UC Berkeley
Virginia University
Yale University

MEDICINE

UCLA

Columbia University
Cornell University
Harvard University
Illinois University
John Hopkins University
Michigan University
Stanford University
UC Berkeley
Yale University

QUALITY INSTITUTIONS

UCLA

Chicago University
Cornell University
Harvard University
Michigan University
Princeton University
Stanford University
UC Berkeley
Wisconsin University
Yale University

SCHOOL OF EDUCATION

UCLA

Chicago University
Columbia University
Harvard University
Michigan University
Pennsylvania University
Stanford University
UC Berkeley
Wisconsin University
Yale University

CURRICULUM

UCLA

Chicago University
Harvard University
Michigan University
Pennsylvania University
Princeton University
Stanford University
UC Berkeley
Wisconsin University
Yale University

UCLA-NCAA Postgraduate Scholarship Winners (65)



Elisabeth Bachman
Volleyball, 2001



Kate Richardson
Gymnastics, 2005



Chris Joseph
Football, 2008



Drew Shackleton
Track/CC, 2009



Kyle Shackleton
Track/CC, 2009

NCAA Postgraduate Scholarship Winners (65)

Football (17)

1966-67 Ray Armstrong*
1966-67 Dallas Grider
1969-70 Greg Jones
1973-74 Steve Klosterman
1975-76 John Sciarra
1976-77 Jeff Dankworth
1977-78 John Fowler
1982-83 Cormac Carney
1983-84 Rick Neuheisel
1985-86 Mike Hartmeier
1989-90 Rick Meyer
1992-93 Carlton Gray
1995-96 George Kase
1998-99 Chris Sailer
Shawn Stuart
1999-00 Danny Farmer
2007-08 Chris Joseph

Men's Gymnastics (1)

1991-92 Scott Keswick

Men's Soccer (1)

1997-98 Josh Keller

Men's Basketball (5)

1968-69 Kenny Heitz
1970-71 Terry Schofield
1979-80 Kiki Vandeweghe
1992-93 Richard Petruska
1994-95 George Zidek*

Men's Swimming (8)

1975-76 Tim McDonnell
1978-79 Dan Stephenson
1984-85 Bruce Hayes
1984-85 Pat Thomas
1985-86 Steve Martz
1986-87 Brian Jones
1991-92 Andrea Cecchi
1992-93 David Fleck (diving)

Men's Tennis (1)

1995-96 Srdjan Muskatirovic

Men's Track and Field (5)

1977-78 Willie Banks
1994-95 John Godina
1997-98 Josh Johnson
2008-09 Drew & Kyle Shackleton

Men's Volleyball (4)

1970-71 Ed Machado
1981-82 Karch Kiraly
1986-87 Asbjorn Volstad
1996-97 Trong Nguyen*

Men's Water Polo (4)

1982-83 Brian Black
1995-96 Thomas Wong
1999-00 Parsa Bonderson
2000-01 Sean Kern

Women's Basketball (1)

1985-86 Anne Dean

Women's Golf (1)

1985-86 Kay Cockerill

Women's Gymnastics (4)

1989-90 Jill Andrews
2002-03 Kristin Parker
2002-03 Onnie Willis
2005-06 Kate Richardson

Softball (2)

1992-93 Lisa Fernandez
1994-95 Jennifer Brundage

Women's Swimming (5)

1995-96 Annette Salmeen
1999-00 Keiko Price
2000-01 Brigid Dwyer
2001-02 Katie Younglove
2003-04 Kristen Lewis

Women's Tennis (1)

1983-84 Karen Dewis

Women's Track and Field (3)

1996-97 Amy Acuff
1997-98 Nada Kawar
2006-07 Jacqueline Nguyen

Women's Volleyball (2)

1993-94 Julie Bremner
2000-01 Elisabeth Bachman

*Alternate Selections

ESPN The Magazine

All-American Hall of Fame (7)

1988 Donn Moomaw, FB
1990 Jamaal Wilkes, BB
1994 Bill Walton, BB
1994 Coach John Wooden, BB
1999 John Fowler, BB
2005 Cormac Carney, FB
2009 Karch Kiraly, VB

NCAA Silver Anniversary Award (8)

1978 Rev. Donn Moomaw, Football '53
1981 Willie Naulls, Basketball '56
1994 Kareem Abdul-Jabbar, Basketball '69
1999 Bill Walton, Basketball '74
2003 Ann Meyers, Basketball '78
2008 Dot Richardson, Softball, '82
Cormac Carney, Football, '82
2010 Jackie Joyner-Kersey, BB-Track, '85

Rhodes Scholarships (5)

1925 John Olmsted, Tennis
1962 William Zeltonoga, Wrestling
1969 Harold Griffin, Football
1996 Annette Salmeen, Swimming
2008 Chris Joseph, Football

NCAA Theodore Roosevelt Award (4)

1977 Tom Bradley, Former LA Mayor
1984 Rafer Johnson, Calif. Special Olympics
1996 John Wooden, Former UCLA BB Coach
2003 Donna de Varona, Commission on Title IX

NCAA Top Eight Award (14)

1975-76 John Sciarra, FB
1976-77 Jeff Dankworth, FB
1981-82 Karch Kiraly, VB
1982-83 Cormac Carney, FB
1988-89 Carnell Lake, FB
1989-90 Jill Andrews, GYM
1992-93 Carlton Gray, FB
1992-93 Scott Keswick, GYM
1993-94 Lisa Fernandez, SB
1993-94 Julie Bremner, VB
1996-97 Annette Salmeen, SW
2001-02 Stacey Nuveman, SB
2003-04 Onnie Willis, GYM
2006-07 Kate Richardson, GYM

UCLA Community Outreach/Wooden Academy

All UCLA head coaches stress involvement with the campus and the community. Whether it's volunteering at an inner-city youth clinic, speaking to children at elementary and middle schools in the area, or assisting in campus programs such as 'Marathon Kids' and 'I'm Going to College,' community service is an important aspect of being a Bruin. These outreach opportunities give student-athletes a chance to mentor youth, give back to the community and serve as ambassadors for UCLA Athletics.



Community Outreach

Bruin student-athletes, coaches and staff have the opportunity to participate in community service activities on campus and throughout the Los Angeles area. Examples of these events include;

- Marathon Kids
- Dribble for the Cure
- Mattel Children's Hospital
- Elementary/Middle School Visits
- Team Prime Time/Prime Time Games
- UCLA Lab School Jogathon
- I'm Going to College
- Adopt a Classroom
- Special Requests/Events

These outreach opportunities give student-athletes a chance to mentor youth, give back to the community and serve as ambassadors for UCLA Athletics.

Wooden Academy: Teamwork, Leadership and Character

The Wooden Academy is a comprehensive leadership development program designed to educate and support the standards of leadership for Bruin student-athletes. The pillars of the Wooden Academy are teamwork, leadership and character. The program is named after legendary Coach John Wooden, and strives to teach the values and principles of his Pyramid of Success. We believe that these skills will assist student-athletes in their pursuit to be successful leaders and teammates at UCLA, and as they prepare to be champions in life. Student-athletes will have the opportunity to participate in the Wooden Academy each year by attending seminars and learning practical leadership lessons from coaches, administrators and Bruin alumni.

Websites, Quarter System, UCLA Weather

UCLA MAIN WEBSITES FOR RECRUITS

UCLA Official Sports Site:

www.uclabruins.com

UCLA Internet Broadcasts:

www.uclabruins.com/multimedia/ucla-stretch.html

Bruin Cam/Wooden Tribute:

<http://www.spotlight.ucla.edu/john-wooden>

<http://maps.ucla.edu/camtest.htm?d=d&d=d&d=d&d=d&d=d>

UCLA University Official Site:

www.ucla.edu

UCLA Facebook Site:

<http://www.facebook.com/uclaathletics>

UCLA Sports Nutrition Site:

www.fuelingbruins.blogspot.com

UCLA TWITTER SITES

UCLA Athletics:

<http://twitter.com/UCLAAthletics>

UCLA Football Coach Rick Neuheisel on Twitter:

<http://twitter.com/CoachNeuheisel>

UCLA Basketball Coach Ben Howland On Twitter:

http://twitter.com/Ben_Howland

UCLA Basketball Coach Nikki Caldwell on Twitter:

<http://twitter.com/NikkiCaldwell>

UCLA Gymnastics Coach Valorie Kondos Field on Twitter:

<http://twitter.com/uclagymnastics>

UCLA Men's Golf on Twitter:

http://twitter.com/UCLA_bruin18

UCLA Women's Golf On Twitter:

<http://twitter.com/uclawomensgolf>

UCLA Men's Tennis on Twitter:

<http://twitter.com/uclatennis>

UCLA Women's Tennis on Twitter:

<http://twitter.com/uclawtennis>

UCLA Women's Volleyball on Twitter:

<http://twitter.com/UCLAWomensVB>

UCLA Water Polo On Twitter:

<http://twitter.com/uclawaterpolo>



Softball won UCLA's record 106th NCAA Team Title. All student-athletes receive free tickets to UCLA home regular season sports events to support our great teams.

UCLA Academic Quarter System Dates

Fall Quarter: Late September-Mid-December

Winter Quarter: Early January-Mid-March

Spring Quarter: Late March-Mid-June

Summer Sessions: Late June-Mid-September

*Quarters are 10 weeks of instruction with a final exam in week 11

UCLA Weather

- 74 degrees average year-round high temperature
- 55 degrees average year-round low temperature
- 334 average sun days a year

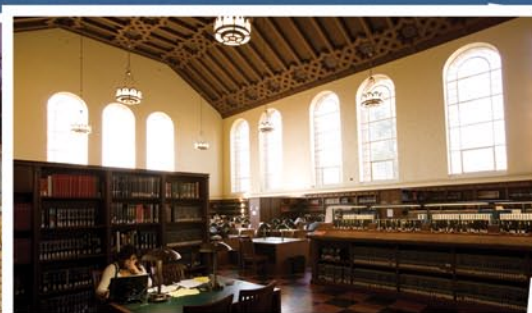
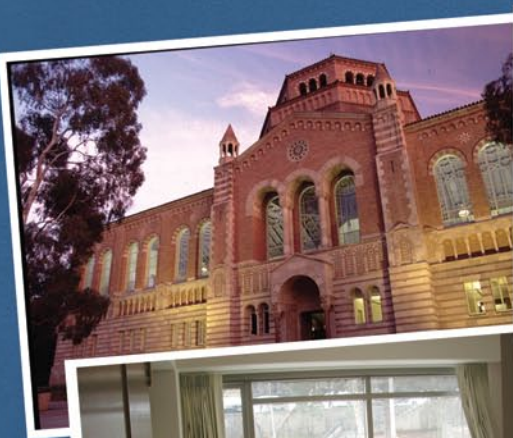
UCLA Student Life & Activities



UCLA offers many on-campus locales to relax, like the Sunset Canyon Recreation Center, which houses numerous pools, volleyball and tennis courts and picnic areas. Bruins can get their workout in at The Wooden Center, which was remodeled in the summer of 2005 and features cardio equipment with flat screen tv's and increased workout space. The Wooden Center also features a rock climbing wall and basketball courts.



UCLA Student Life & Activities



11 — Nation's #1 College Experience

The Best On-Campus Housing Options; plus Great Food

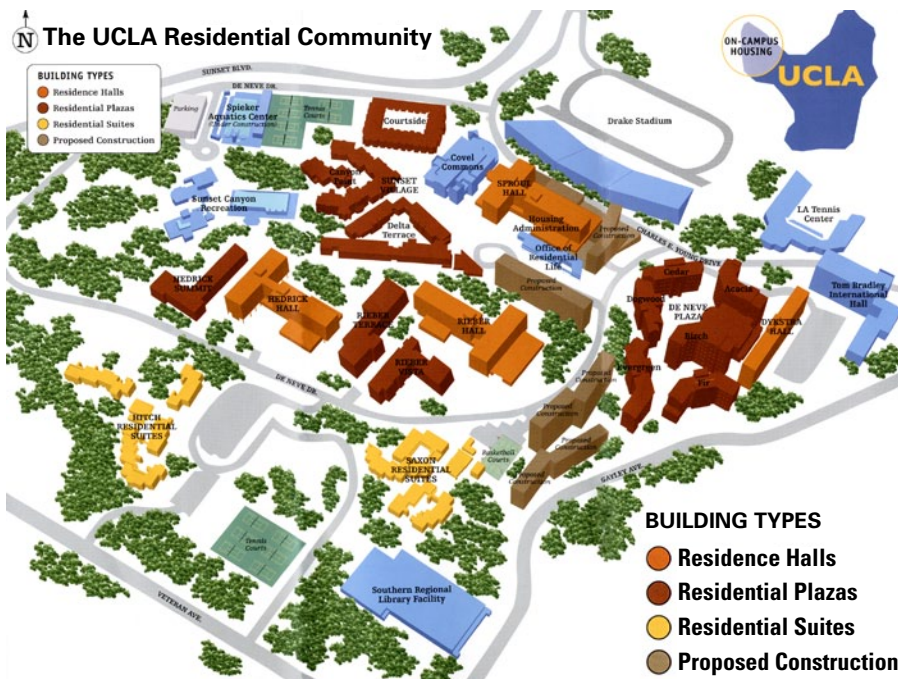
UCLA On-Campus Housing Options:

All include up to 19 meals a week between 7 am and 2 am and student-athletes are guaranteed priority housing all 4 years if they desire

- A. Residence Halls (Dykstra, Sproul, Rieber, Hedrick as traditional high-rises)
 1. Have separate showers for men and women, community bathrooms, study lounges, and laundry facilities on each floor;
- B. Residential Plazas (Sunset Village, De Neve, Hedrick Summit, Rieber Terrace and Rieber Vista)
 1. Single/double/triple rooms with two shared bathrooms, air conditioning, study space, lounges, laundry;
- C. Residential Suites (Hitch, Saxon)
 1. Furnished two-bedrooms with own entrance, living room, shared bathroom. Each has its own laundry room and sundeck/recreation area;

Standard On-Campus Housing Amenities:

- Basic Cable Television
- High Speed Internet
- Student Technological Center
- Overnight Shipping and Full Copying Services
- Recreation/Game Rooms
- Free access to basketball, volleyball, pools, tennis
- Early morning/late night restaurants
- 'To-Go' Meals
- Bruin Card Charge Services
- Weekly Maid Services



Scholarship student-athletes are guaranteed a two person dorm room for as long as they want to stay on campus

Numerous amenities are available for student-athletes



Student-athletes live in both high rise dorms and apartment-style suites

The J.D. Morgan Center



UCLA's commitment to comprehensive academic support services and a desire to expand existing resources to best serve the Bruin student-athlete of today and tomorrow remains constant. In an effort to support this ideal, UCLA's J.D. Morgan Athletic Center underwent a major expansion that upgraded the former facility into a high-tech building for the 21st century.

The project increased office space for both administrative and coaching staff, improved the student academic support services, and provided a "state of the art" Athletic Hall of Fame exhibiting the illustrious Bruin history and highlighting current events.

Below are some highlights of the J.D. Morgan Center:

Student-Athlete Academic Learning Center

- 24 computers
- 4 walk-up computers for easy printing
- Free printing
- Learning Center Monitor at all times
- Academic counselors on site

Athletics Hall of Fame

- Hall of Champions featuring UCLA's National Championship trophies
- UCLA's Hall of Fame Inductees
- Interactive Sport displays
- UCLA Spirit Theater
- Olympic Heritage
- Time out Zone

First Class Facilities

The UCLA campus is home to numerous first class facilities for student-athletes of all sports.

- **Spaulding Field** — practice home for the Bruin football team, features SPRINTURF field, along with one natural grass field
- **Rose Gilbert Learning Center** — located in the J.D. Morgan Center, has 24 computers and numerous printers for all of the academic needs of student-athletes
- **Acosta Center** — houses locker rooms, the Athletic Performance Center and Sports Medicine Center
- **Easton Stadium** — houses the 11-time NCAA Championship softball team
- **Drake Stadium & Marshall Field** — home to the nationally-ranked soccer and track and field teams
- **Jackie Robinson Stadium** — home to the Bruin baseball team and was recently renovated with new batting areas and playing surface
- **Pauley Pavilion** — home to the Bruin basketball, gymnastics and volleyball teams
- **Spieker Aquatics Center** — opened in the Fall of 2009, this state-of-the-art aquatics center is the home to the water polo and swimming and diving teams
- **Gifford Golf Facility** — A 3,000 square-foot bermuda bentgrass putting green, greenside/fairway bunker, and a 3,000 square foot tee-box to hit balls onto the field for the golf teams to use.



Center For Athletic Performance

Holistic Approach To Athletic Performance

Olympic Lifting
Functional Training
Dynamic Flexibility

Sports Nutrition
Injury Prevention
Sport Specific Conditioning



15 — Nation's #1 College Experience

The Acosta Sports Training Center



The Acosta Sports Training Center features an 8,000-square foot athletic training and rehabilitation facility with private offices for all of the certified athletic trainers, as well as a doctors' suite and a nutritionist. The facility includes three hydro pools, a large rehabilitation area with stationary bikes, treadmills, elliptical machines and private examination areas. New specialized equipment like the Bod Pod and Anti Gravity Treadmill give UCLA student-athletes an edge.



UCLA Produces the Brightest Stars

KAREEM ABDUL-JABBAR

Only player to win 6 NBA MVP awards

TROY AIKMAN

First quarterback to win 3 Super Bowls in 4 years

ARTHUR ASHE

First African-American to win Wimbledon

DONALD BARKSDALE

First African-American to win an Olympic basketball gold medal

TERRY DONAHUE

First football coach to win bowl games in 7 consecutive seasons

LISA FERNANDEZ

First softball player to be named outstanding college athlete of the year (Honda-Broderick Cup)

FLORENCE GRIFFITH-JOYNER

First woman to run the 100m in under 10.50 seconds

JACKIE JOYNER-KERSEE

Only woman to win back-to-back Olympic heptathlons;
Top Female Collegiate Athlete of the Last 25 Years

KARCH KIRALY

First three-time Olympic gold medalist in volleyball

MIKE LODISH

First player to play in 6 Super Bowls

ANN MEYERS

First four-time female basketball All-American

KEN NORTON, JR.

First player to win 3 straight Super Bowls

JACKIE ROBINSON

First African-American to play Major League Baseball

AL SCATES

First collegiate coach to win 18 NCAA titles in a single sport (now has 19 titles in volleyball)

KENNY WASHINGTON

First African-American to play in the modern era NFL

JOHN WOODEN

First man elected to the Basketball Hall of Fame as a player and coach



UCLA: The #1 Tradition in College Sports



Top Row (L to R) – Reggie Miller, *basketball*; Troy Aikman, *football*; Jimmy Connors, *tennis*; Cobi Jones, *soccer*; Amy Acuff, *track & field*.

Second Row (L to R) – Troy Glaus, *baseball*; Liz Masakayan, *volleyball*; Kareem Abdul-Jabbar, *basketball*; Florence Griffith-Joyner, *track & field*; Karch Kiraly, *volleyball*.

Third Row (L to R) – Jackie Robinson, *baseball*, *track & field* and *basketball*; Lisa Fernandez, *softball*; Arthur Ashe, *tennis*; Bill Walton, *basketball*; Jackie Joyner-Kersey, *track & field*.

Bottom Row (L to R) – Kim Hamilton, *gymnastics*; John Godina, *track & field*; Dot Richardson, *softball*; Denise Curry, *basketball*; Ken Norton, *football*.

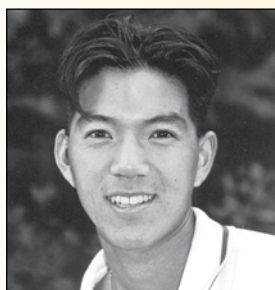
UCLA Student-Athletes Have Job Market Success



Cormac Carney, Football
U.S. District Court Judge



Ato Boldon, Track & Field
Announcer NBC, Universal Sports

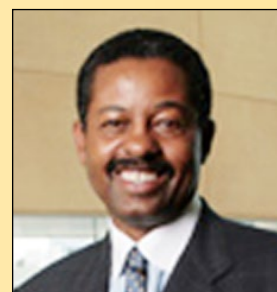


Eric Lin, Tennis
Medical Doctor



Anita Ortega, Basketball
LAPD Captain

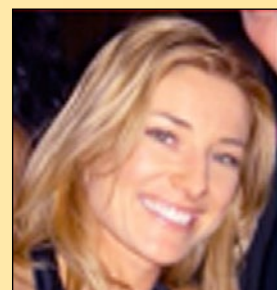
wName, Sport	Position
Gary Beban , Football	Sr. Exec. Dir., CB Richard Ellis
Eric Biefeld , Soccer	Firefighter, La Habra, CA
Pete Blackman , Basketball	UCLA Vice-Chancellor
Bethany Bogart , Soccer	Lawyer, Los Angeles
Ato Boldon , Track & Field	Announcer NBC, Universal Sports
Jamie Brown , Basketball	L.A. County Fire Captain
Cormac Carney , Football	US Dist. Court Judge (So. Calif)
Kay Cockerill , Golf	Golf Analyst, NBC-Golf Channel
Alex Decret , Tennis	Landscape Architect, Los Angeles
Maura Driscoll-Farden , Gymnastics	Broadcaster Lifetime, USA Network
Joel Farkas , Golf	Chairman, JF Real Estate Dev.
Lisa Fernandez , Softball	Broadcaster, ESPN; UCLA Coach
Jen Gardner , Softball	Real Estate Attorney, No. Calif.
Roy Hamilton , Basketball	VP of Production, Fox Sports Net
Tim Harris , Soccer	Sr. VP of Business, Los Angeles Lakers
Melanie Hom , Soccer	Ophthalmologist, San Francisco
Tim Kelly , Volleyball	President, Bring It Promotions
Eric Lin , Tennis	Residency, UCLA Medical Center
Ryan McGuire , Baseball	UCLA MBA; Manager, Bus. Dev.
Bob Myers , Basketball	Attorney, Sports Agent for WMG
Heidi Moneymaker , Gymnastics	Hollywood Stunt Woman, TV-Movies
Heath Montgomery , Tennis	Dentist, Santa Barbara, CA
Paul Nihipali , Volleyball	Movie Director, Video Producer
Anita Ortega , Basketball	Captain, Los Angeles Police Dept.
Doug Partie , Volleyball	President, A.B. Technical Systems
James Puffer , Water Polo	Exec. Dir. Amer. Family Practice, Louisville
Paula Rasmussen , Gymnastics	Pediatrician, Cedar-Sinai Med. Ctr.
Jill Ratner , Soccer	VP of Litigation, Fox Broadcasting
Mike Reider , Golf	Sr. VP/Manager, Union Bank of Calif.
Mary Ricks , Softball	President; Commercial Real Estate, Beverly Hills
Dr. Julie Romias , Volleyball	Doctor, Kaiser, Los Angeles
Sinjin Smith , Volleyball	Broadcaster, Fox Sports Net
LaRee Sugg , Golf	Senior Women's Admin., Richmond Univ.
Tasha Schwikert , Gymnastics	ABC Family 'Make It or Break It', Sports Broadcasting
Stacy Sunny , Softball	Production Manager, Fox Sports Net
Necie Thompson , Basketball	FBI Agent, California
Kevin Walker , Basketball	UCLA MBA; GM Amer. Assoc Hockey
Jeff Williams , Volleyball	Sr. Acct. Executive, EMC Corp.
Chuck White , Golf	Voice-over Actor, Bus. Consultant
Dr. Bryan Wiley , Football	Orthopaedic Surgeon
Joel Wolfe , Baseball	Attorney, Sports Agent for WMG



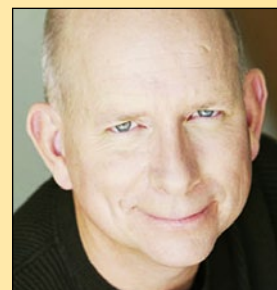
Roy Hamilton, Basketball;
VP Production, Fox Sports



Tim Harris, Soccer
Los Angeles Lakers VP



Heidi Moneymaker,
Gymnastics
Movie Stuntwoman



Chuck White, Golf
Voice-Over Actor

UCLA Alumni Span The World / Job Market

A Key List of Significant UCLA Alumni Accomplishments



Sean Astin
Samwise Gamgee in
"Lord of the Rings" Trilogy



Francis Ford Coppola
Six-time Academy Award
winner (The Godfather I,
II, III)

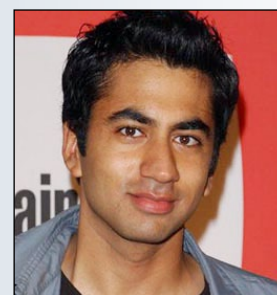


Carrie Ann Inaba
Judge for "Dancing with
the Stars"



Gabrielle Union
Movie Actress
"Bring It On"

Name	Significant Accomplishment
Val Ackerman	Former WNBA President; US Olympic Committee
Sean Astin	Samwise Gamgee in "Lord of the Rings" Trilogy, Actor in other major roles, "24"
Catherine Bell	Actress; movies and TV Show "Jag", "Army Wives"
Sara Bareilles	Singer/Composer; Grammy Nominee for "Love Song"
Howard L. Berman	Calif. Congressman in U.S. House of Rep.
Jack Black	Actor; "School of Rock", "Nacho Libre"
Gina Prince-Bythewood	Wrote 'Love & Basketball', 'Secret Life of Bees' Ran track
Brooke Burke	TV Host; Winner 'Dancing With the Stars'
Carol Burnett	Actress, Emmy Award Winner
Nancy Cartwright	Voice of Bart Simpson on "The Simpsons"
Ted Chen	Co-Anchor KNBC "Today in LA"
Francis Ford Coppola	6 Academy Awards (The Godfather I, II, III)
Marilyn McCoo Davis	7-time Grammy Award winner (Fifth Dimension)
Brad Delson	Lead Guitarist, 'Linkin Park'; Multi-Grammy winner
Giada DeLaurentis	Food Network "Everyday Italian"
Rick Dickert	Skyfox, Fox-11 Meteorologist, Emmy Winner
Brenda Ross Dulan	Sr. VP Wells Fargo Bank; Nat. Spokesperson
James Franco	Actor; "Milk", "Spiderman", "Fly Boys"
Brad Garrett	Won Emmy as Robert in "Everybody Loves Raymond;" 1st Star Search \$100,000 winner
Mariska Hargitay	Actress: "Law & Order"; 2005 Golden Globe winner, Emmy nominee
Mark Harmon	Actor and Producer; CBS "Navy NCIS"; People Magazine "Man of the Year"
Carrie Ann Inaba	Choreographer; Judge on "Dancing w/the Stars"
Heather Locklear	Actress: "Dynasty," "Melrose Place," "Spin City"
Frank Marshall	President of Kennedy-Marshall; helped produce "Indiana Jones" and "Back to the Future" series
Megan McArthur	Astronaut; Space Shuttle Atlantis
Danica McKellar	Actress: Winnie in "The Wonder Years;" Featured in TV's "West Wing;" Published for mathematics research
Billy Mills	1st black graduate, UCLA Law School; 1st black elected to L.A. City Council: Superior Court Judge
Michael Nash	Presiding Judge, L.A. Juvenile Court
Michael Ovitiz	Former CEO, Disney Corporation
Kal Penn	Obama advisor; actor 'House', 'Harold-Kumar'
Tim Robbins	Actor/Producer; 2003 Academy Award winner "Mystic River"; 2003 UCLA Alumnus of the Year
Nobutada Saji	CEO, Suntory, Ltd.; Int. Businessman
Henry Samueli	UCLA Samueli Engineering School; Owner 2007 Stanley Cup Champion Anaheim Ducks
Darren Star	Golden Globe, Emmy nominee as producer of HBO's "Sex In The City;" Assisted "BH 90210" and "Melrose Place"
Robert R. Takasugi	Judge, U.S. District Court; 1st Japanese-American appointed Fed. Court Judge
Antonio Villaraigosa	Mayor of Los Angeles; former Speaker of the California Assembly
Gabrielle Union	Actress; "Bring It On", "Breakin' All the Rules", "Daddy's Little Girl", "Meet Dave"
Casey Wasserman	President, Owner WMG, Businessman
Jaleel White	Actor: Urkel in "Family Matters", Director
Jane Yamamoto	Newscaster-Field Reporter for Fox News-LA
Zev Yaroslavsky	Los Angeles County Supervisor, 3rd District



Kal Penn
Obama Advisor, Actor



Mark Harmon
Actor, Former Football Player
People Mag. "Man of Year"
Star of Navy NCIS



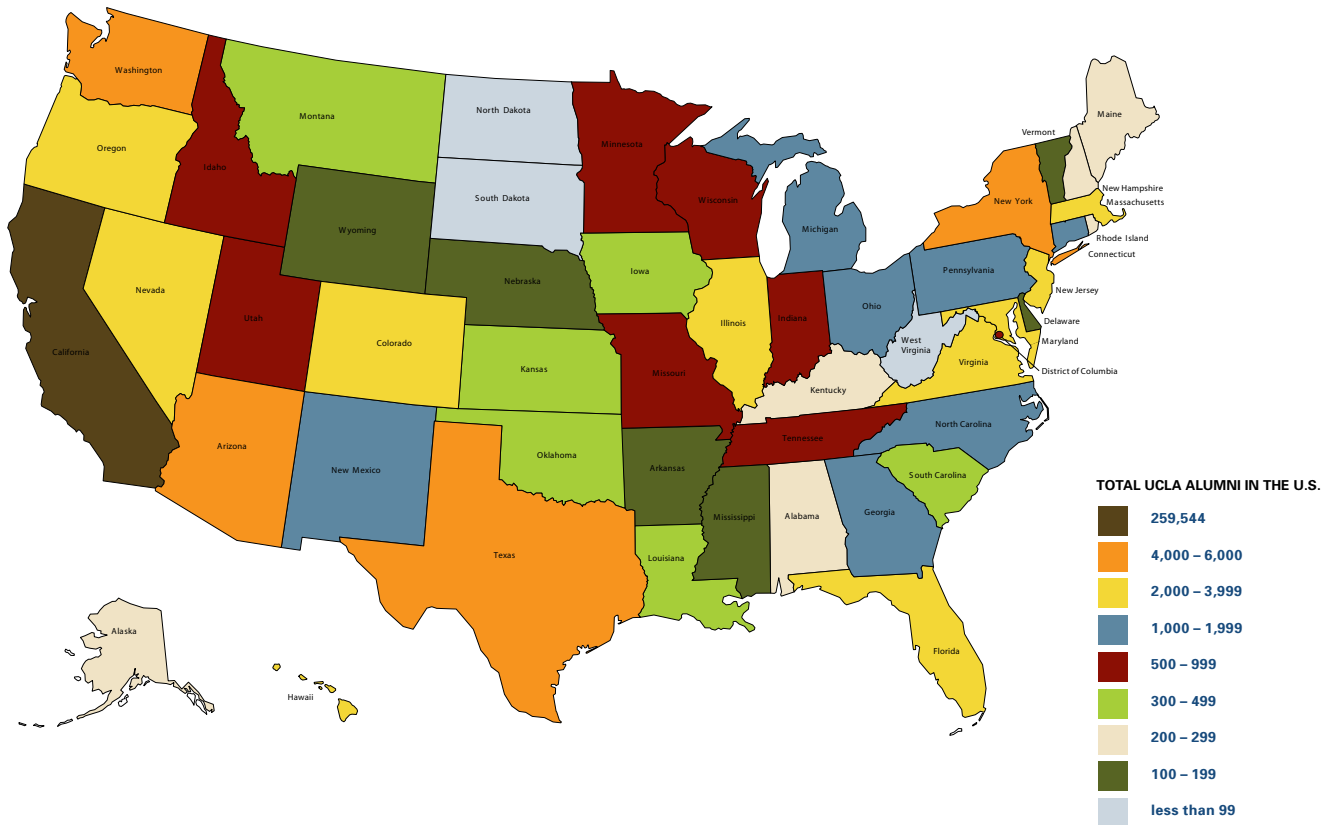
Heather Locklear
Actress
Melrose Place, Spin City



Antonio Villaraigosa
Mayor of Los Angeles;
former Speaker of the
Calif Assembly

UCLA Alumni Networks Cover The World

UCLA Alumni in the United States (3% live in foreign countries)



UCLA Alumni Groups Exist World-Wide (www.UCLAalumni.net/FindBruins)

In California

- Los Angeles' Westside
- Downtown Los Angeles
- LA-South Bay/Beach Cities
- Lake Arrowhead Area
- Orange County
- Greater Pasadena
- Palm Springs
- Inland Empire
- (San Bernardino and Riverside Counties)
- Sacramento
- San Diego County
- San Fernando Valley
- San Francisco/Bay Area
- Santa Clarita
- Ventura County
- Whittier

Outside California

- Boston, MA
- Chicago, IL
- Honolulu, HI
- New York City
- Phoenix, AZ
- Portland, OR
- Seattle, WA
- Washington DC

International

- China
- Hong Kong
- Japan
- Korea
- Singapore
- Taiwan
- Thailand

The Portfolio of the Typical UCLA Graduate

(almost 300,000 alumni were utilized for the figures below along with career center and local area housing statistics)

\$77,500	Average yearly personal income
\$765,355	Average investment portfolio value
\$522,500	Average value of home ownership
92%	Own their own homes or condominiums
51%	Own other real estate properties
68%	Hold management/professional positions
67%	Have done postgraduate studies after UCLA
65%	Donate up to 10% of income to charity
75%	Have traveled outside U.S. in last 2 years

Where UCLA Graduates Live

- 45% Live in Los Angeles County
- 62% Live in Southern California
- 77% Live in the State of California
- 97% Live in the United States

This Is Los Angeles

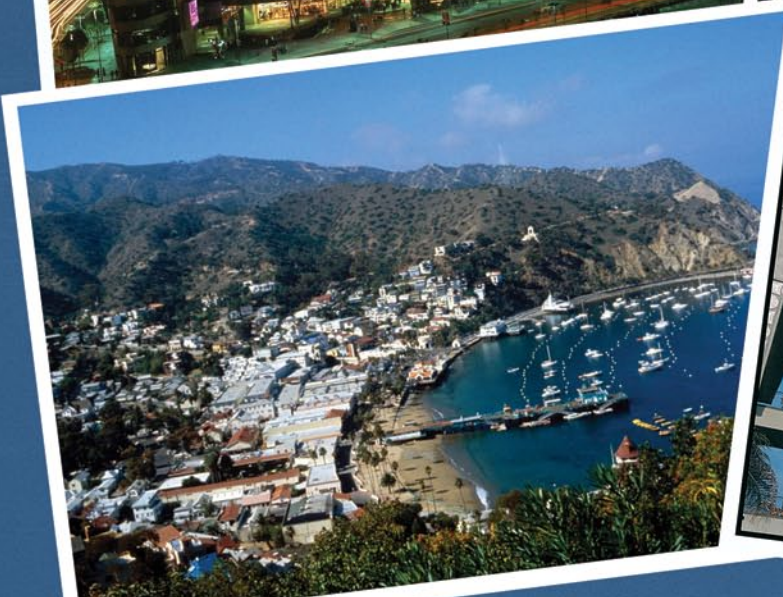


Art and culture are a very vibrant part of Los Angeles. The Getty Center is just one of many museums in the area. The Disney Concert Hall is also a short drive from campus. Westwood, a suburb of Los Angeles, offers UCLA students and the surrounding communities many entertainment options. Movie premieres are a common occurrence as stars often visit the Fox Theater for opening night. Westwood is home to numerous coffee shops, stores and restaurants and is just minutes from campus.

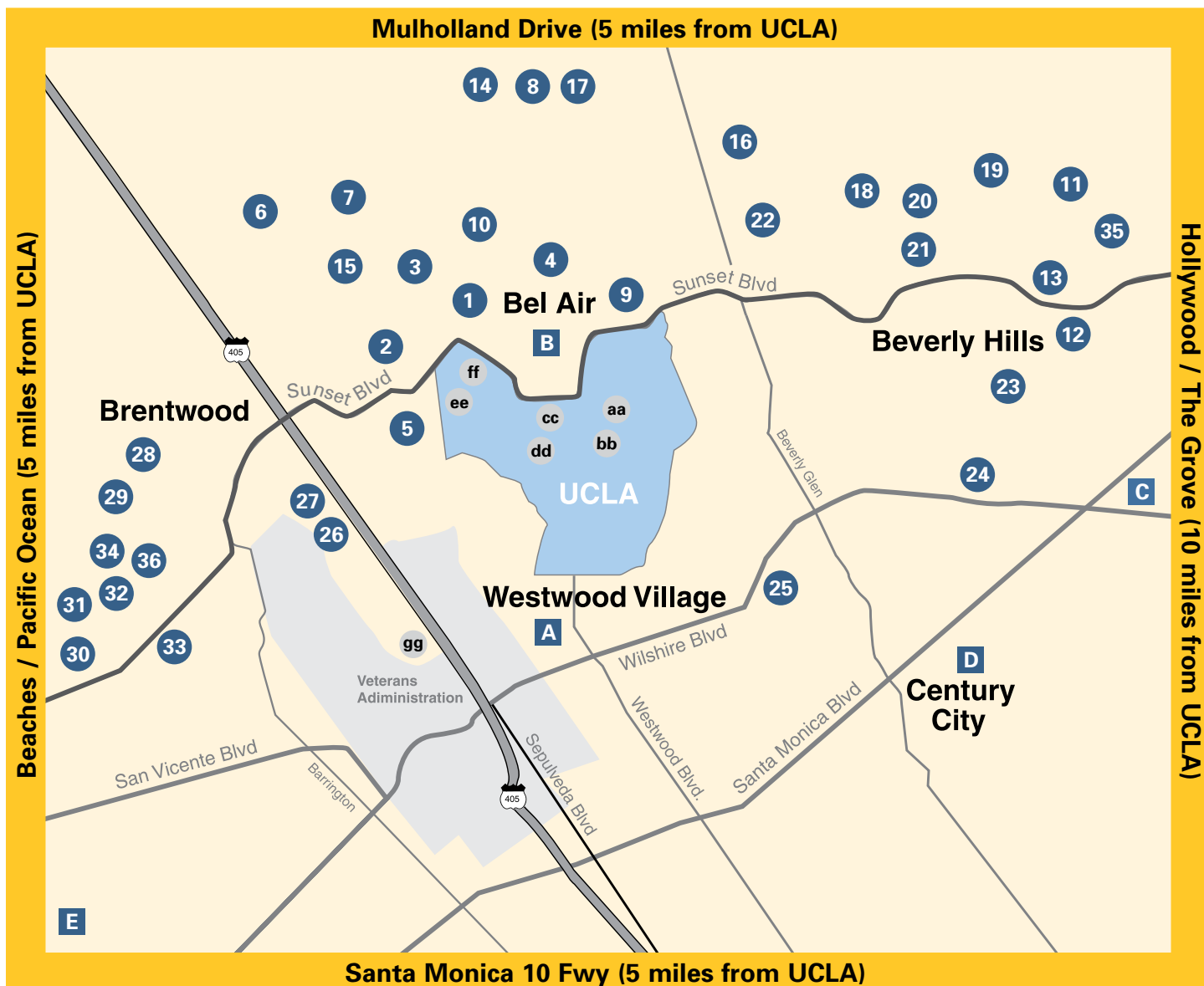


This Is Los Angeles

The city of Los Angeles is internationally recognized as America's leader in the entertainment and communications industries, as well as tourism and recreation. Los Angeles and surrounding Orange County offer numerous options for fun and entertainment. Southern California is home to two NBA, NHL, MLB and MLS teams. Los Angeles also has played host to numerous sporting events including the XGames, World Cup, Super Bowl and Olympics. Southern California also has three amusement parks - Knotts Berry Farm, Magic Mountain and Disneyland.



UCLA's Community is Where Everybody Wants To Live



- 1 Clint Eastwood
- 2 Tom Cruise/Katie Holmes
- 3 Tom Hanks/Rita Wilson
- 4 Pete Sampras/Bridgette Wilson
- 5 Sean Astin
- 6 Nicolas Cage
- 7 Courteney Cox/David Arquette
- 8 Warren Beatty/Annette Bening
- 9 Kareem Abdul-Jabbar
- 10 Lionel Richie
- 11 Brad Pitt/Angelina Jolie

- 12 Dr. Phil McGraw
- 13 Samuel L. Jackson
- 14 Jack Nicholson
- 15 Ben Affleck/Jennifer Garner
- 16 Kirsten Dunst
- 17 Al Pacino
- 18 Eddie Murphy
- 19 Halle Berry
- 20 Harrison Ford/Calista Flockhart
- 21 John Lithgow
- 22 Paris Hilton
- 23 Casey Wasserman

- 24 Jay Leno
- 25 Charlie Sheen
- 26 Antonio Banderas
- 27 Billy Crystal
- 28 Jim Carrey
- 29 Jackie Chan
- 30 Arnold Schwarzenegger
- 31 Michael Douglas/Catherine Zeta-Jones
- 32 Whoopi Goldberg
- 33 Lindsay Lohan
- 34 Mark Harmon
- 35 David Beckham
36. Reese Witherspoon

Adjacent Sites

- A Westwood Village, UCLA's Mall
- B Bel Air Country Club
- C Beverly Center
- D Century City Mall
- E Santa Monica Promenade

UCLA Sites

- aa Morgan Center
- bb Pauley Pavilion
- cc Drake Stadium
- dd LA Tennis Center
- ee Spieker Aquatics
- ff Easton Stadium
- gg Robinson Stadium